

3

CASE STUDY

PROJECT

Lloyds Weoley Castle

LOCATION

Weoley Castle Road

Birmingham

CLIENT

Lloyds / Mitie

DESCRIPTION

Lloyds Bank Weoley Castle
Branch

The building was suffering from
severe water ingress due to a
failing flat roof.



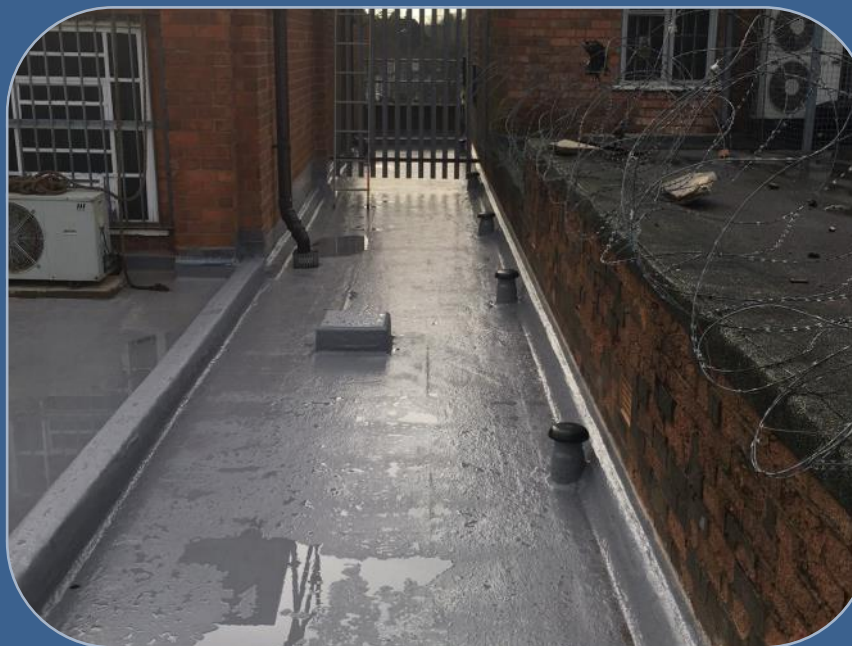
3

CASE STUDY

Before...



After...



Builders you can trust

CASE STUDY

SEAL OF APPROVAL AT WEOLEY CASTLE

Following various cases of water ingress T and D were employed by MITIE on behalf of Lloyds Bank to attend to the flat roof areas at the branch.

Upon appointment T and D worked alongside Centaur to complete a full extensive survey to ascertain the causes of water ingress and compiled a full specification on the remedial works required.



The installation itself was a challenging one, with numerous upstand details, plant, gulley's and drainage systems all adding to the complexity of the project.

With safety always viewed as a top priority at T and D we worked alongside one of our trusted contractors (OMEGA scaffolding) to ensure the required access equipment and edge protection was in situ to ensure

the Health and Safety of our staff, the client and general public.

Overcoming all of the challenges presented, the final result was a complete overhaul of the roof space and a single point guarantee of 10 years has been placed on the finished product, much to the delight of the staff in the branch below!



Builders you can trust

SPECIFICATION

- 325m² Liquid Applied Waterproof System
- Redressing of internal decorations